

world class **fire pumps** PRE-PAC®



Protect Life and Property With Prepackaged Fire Control

Patterson Pumps... A World Leader in Fire Control

Patterson Pump Company continues to be the industry leader in prompt delivery of fire pumps worldwide, providing horizontal split case, vertical turbine, end suction and vertical in-line pumps, with electrical motors, diesel engines or dual drive combinations. Its fire protection pumps were shipped to over 60 countries in the year 2000.

Patterson's manufacturing philosophy is totally dedicated to having its pumps arrive when promised, allowing customer's new construction or retrofit projects to stay on time and within budget.

A subsidiary of The Gorman-Rupp Company, Patterson Pump Company is ISO 9001 certified, and has implemented a Six Sigma optimized quality level program. These attest to its world-class quality and dependability. The company has committed countless dollars to maintaining its leadership role, and its long-standing record of product reliability through expanded production fabrication facilities and the latest in high tech, computer-aided fabrication tools and techniques.

The company's industry standard fire pumps are UL and ULC/cUL listed, FM and NYBSA approved, and meet the requirements set forth by the National Fire Protection Association (Pamphlet No. 20) in the western hemisphere. Patterson's European subsidiary, Patterson Pump Ireland Ltd., is ISO 9001 certified with its industry standard fire pumps being UL and FM listed, LPCB and VdS approved, and also meeting NFPA Pamphlet No. 20 requirements. All Patterson fire pumps conform to, and in most cases surpass, the standards set forth by these approving agencies and listing authorities.

Offering customers lower maintenance costs, less downtime, and prompt delivery of O.E.M. parts which are guaranteed to last longer, Patterson is the epitome of reliability as a fire pump manufacturer. This reliability is enhanced by coordinating training in proper operation and maintenance of its products at its training facility in Toccoa, Georgia.



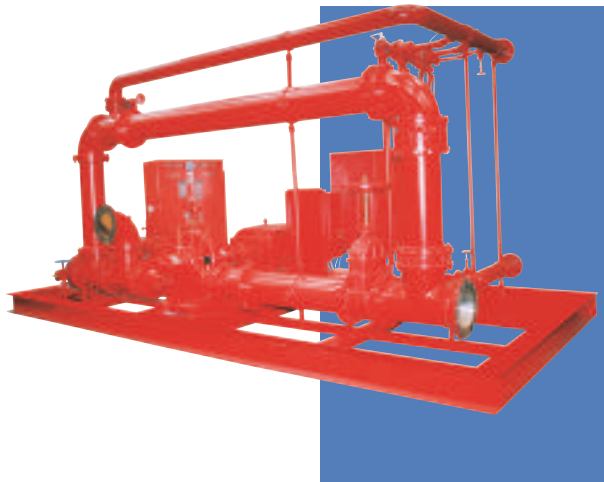
Patterson Headquarters



Patterson Ireland Ltd.



ISO Certified Inspection



The Patterson Pre-Pac® ... Designed to Minimize Labor, Engineering and Installation Time

When you need a new fire control system, you can't afford anything less than the very best. There is clearly too much at risk, in buildings...property...human lives.

There are, however, other considerations—budget restraints or space limitations, or both. Plus, you need it shipped on time.

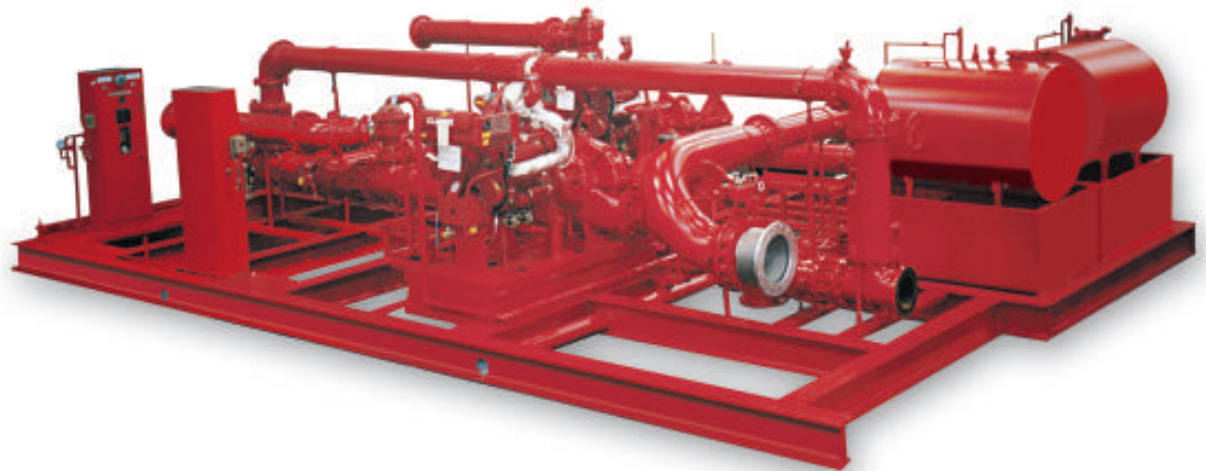
That's why the Patterson Pre-Pac was created. It provides highly efficient, quality fire control in an economical, compact package at less cost and in less space. Unlike conventional pumping systems, the Pre-Pac is self-contained so it saves money by reducing labor, engineering and installation time.

The Patterson Pre-Pac is the product of a long heritage of advanced fire pump engineering, design and development.

With that kind of knowledge and years of experience, you can be sure that it offers the very best in pumping technology. After all, Patterson has been a leader in the industry for over 45 years.

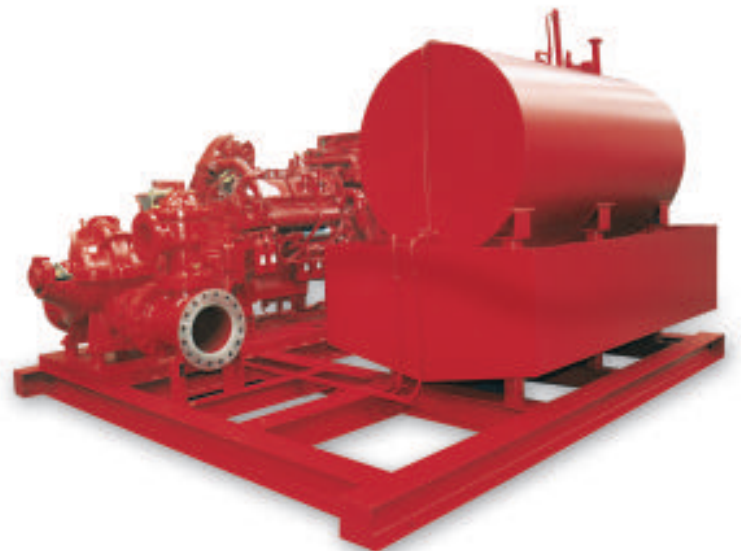
The Pre-Pac is built in a controlled environment at our facility, providing single source responsibility. It is pre-engineered to meet, or exceed, all applicable codes. For an added measure of security, it is completely tested in accordance with NFPA 20 and all piping is hydrostatically tested.

It offers a very simple hook-up to water and electricity at the job site for contractors, something no conventional fire protection pumping system can provide.



THE PATTERSON PRE-PAC® OFFERS:

- Lower Cost
- Compactness & Space Efficiency
- Pre-engineering to Meet All Applicable Codes
- With or Without Housing Enclosures
- Availability in Engine or Electric Driven Units
- Compatibility of Equipment
- Fabrication in a Controlled Environment
- Single Source Responsibility
- ISO 9001 Certified
- Six Sigma Quality in Product, Performance and Service



The Controlled Fabrication of Patterson Pre-Pacs

The real muscle of this highly efficient, prepackaged fire system is Patterson's reliable split case or vertical turbine pump, featuring discharge pressures of 40 to 390 psi and capacities of 150 to 5,000 GPM. Vertical in-line and end suction pumps are sometimes employed with pressures of 40 to 150 psi and capacities of 50 to 750 GPM.

Flexibility in engineering design is a Patterson hallmark, beginning with a 3-D CAD drawing of a skid-mounted unit with single or dual capability.

The Pre-Pac is designed to satisfy specific requirements. If you require a diesel driven unit or an electric driven unit, or both, the Pre-Pac can be fabricated to meet your exact needs. If you require special metallurgies for seawater service, these are available, too.

Whether you select the basic skid-mounted package or a completely housed Pre-Pac, you can be sure that all sensing lines, fittings, piping, drive, pump and controls are designed to meet, or exceed, all applicable codes and local regulations.

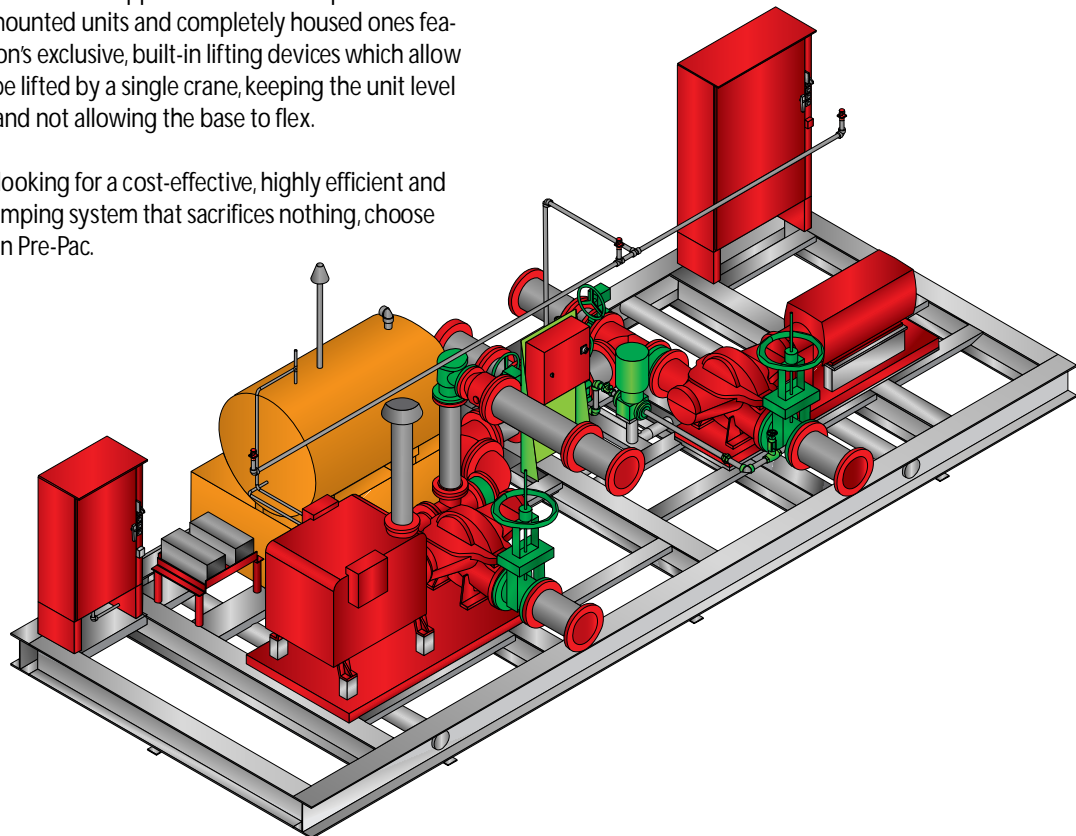
You are also assured that your unit has been tested in accordance with NFPA 20 and all its piping has been hydrostatically tested. Nothing is left to chance in the fabrication of the Patterson Pre-Pac, the best quality prepackaged fire pump system in the market today.

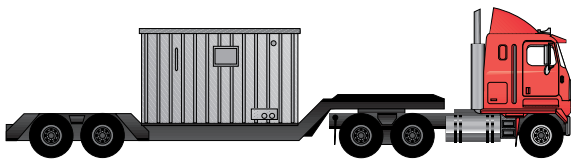
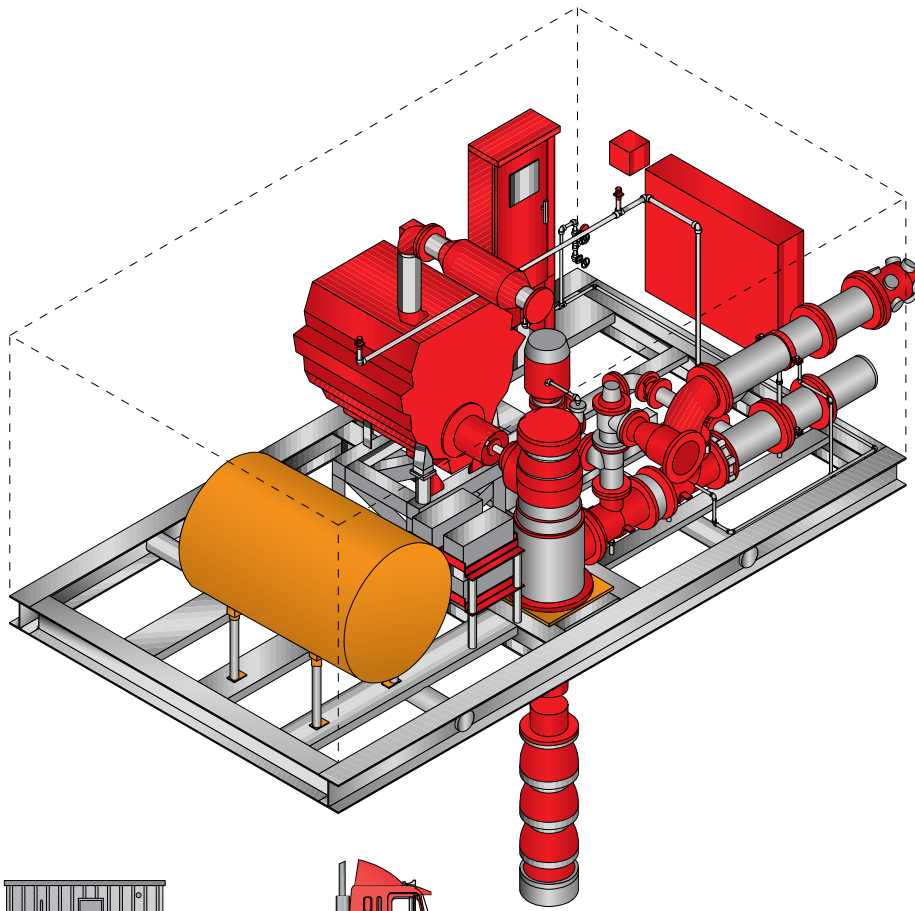
Pre-Pacs are built on one-piece skids up to 12' x 40'. Larger units can be built and shipped in two or three pieces. Both open skid-mounted units and completely housed ones feature Patterson's exclusive, built-in lifting devices which allow the unit to be lifted by a single crane, keeping the unit level at all times and not allowing the base to flex.

So, if you're looking for a cost-effective, highly efficient and compact pumping system that sacrifices nothing, choose the Patterson Pre-Pac.



3-D CAD Capabilities





Complete housed unit ready for shipment.



Easy access to all housed components.



Electrical component installation and wiring.



Final inspection of prepackaged unit.





PATTERSON PUMP COMPANY
A Subsidiary of The Gorman-Rupp Company
Post Office 790 • Toccoa, Georgia 30577 U.S.A.
(706) 886-2101 • Fax: (706) 886-0023
www.pattersonpumps.com • E-mail: marketing@pattersonpumps.com

PATTERSON PUMP COMPANY/ MIDDLE EAST
P.O. Box 72083
Helioupolis 16310
Athens, Greece
E-mail: pattump@otenet.gr

PATTERSON PUMP COMPANY/ FAR EAST
63 Hillview Avenue
#07-18 Lam Soon Industrial Building
Singapore 669569
E-mail: pattump@signet.com.sg

PATTERSON PUMP IRELAND LTD.
Newbrook
Mullingar, Co. Westmeath
Ireland
E-mail: pattersonpump@tinet.ie

PATTERSON PUMP UK
Century House
3 Clarks Lane
Newark-on-Trent
Nottingham NG24 2EF
United Kingdom